



By Appointment to
His Majesty The King
Supplier of Signs & Event Graphics
Service Graphics
London



SOUND & VISION GALLERY
SOUND & VISION GALLERY
SOUND & VISION GALLERY

National Science and Media Museum
Bradford



+ SOUND VISION

- **Project:** Sound + Vision
- **Client:** Science Museum Group
- **Exhibition Designers:** The AOC
- **Fit-Out Contractor:** Workhaus
- **Graphic Production & Installation:** Our team



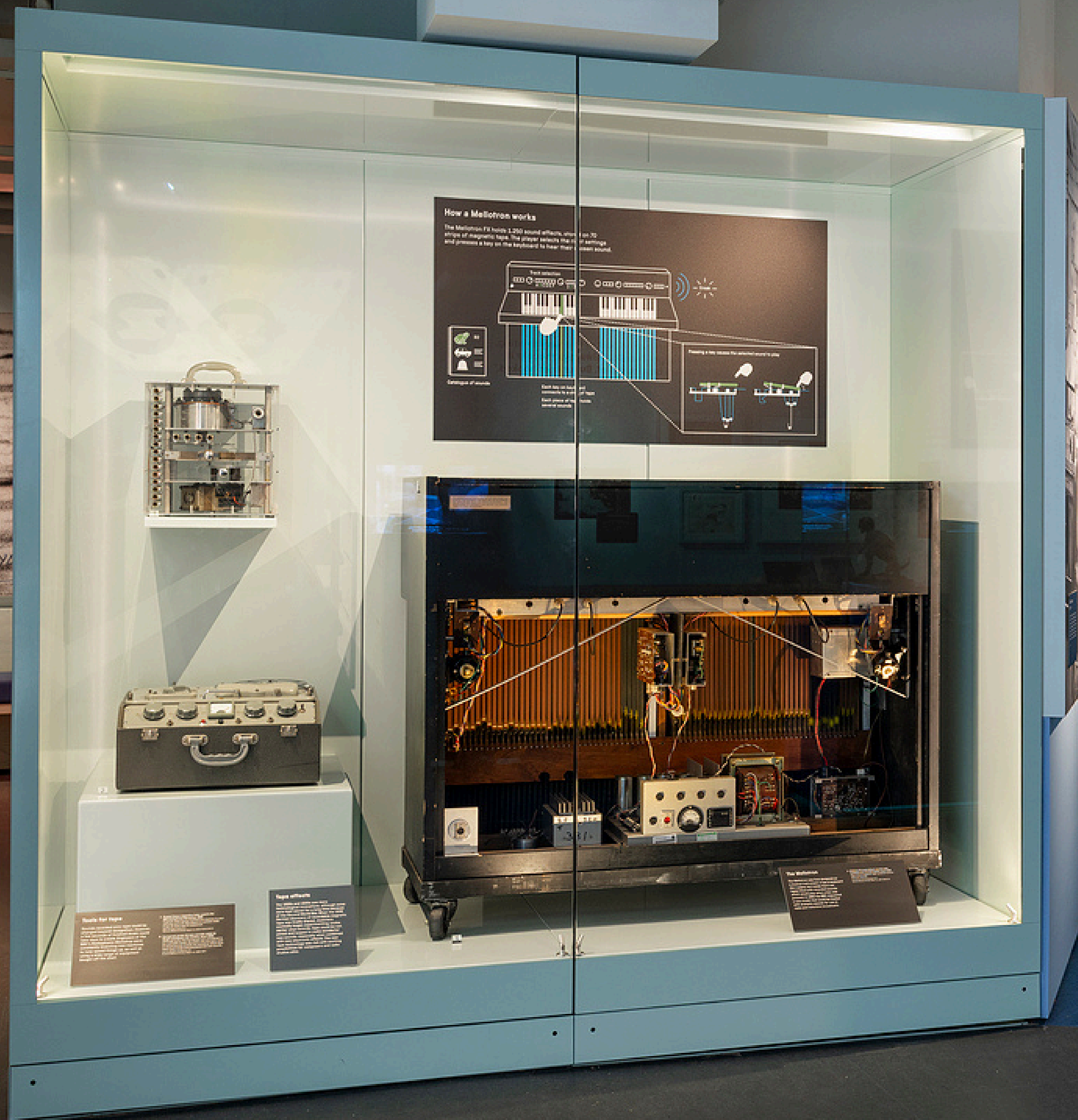
PROJECT OVERVIEW

We were commissioned to produce and install the complete graphic package for the Sound & Vision Gallery, a permanent exhibition within the Science Museum, Bradford. The gallery is intended to remain in place for 25+ years, requiring all graphic elements to meet exceptionally high standards of durability, consistency, and long-term performance.

The project involved the delivery of over 700 bespoke graphic elements, spanning signage, wayfinding, interpretation, tactile content, and large-scale wall graphics. No standard systems were used; every item was custom designed and fabricated to integrate precisely with the exhibition architecture and narrative developed by The AOC, and coordinated closely with Workhaus during fit-out.

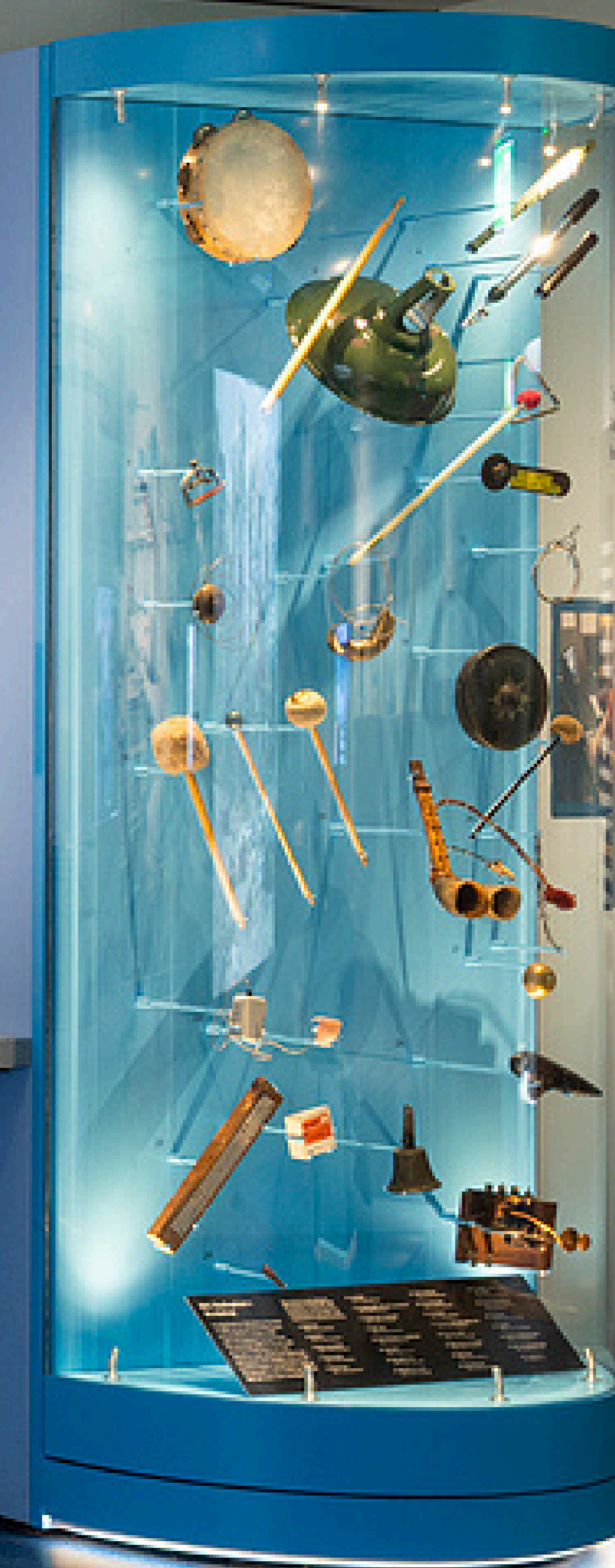
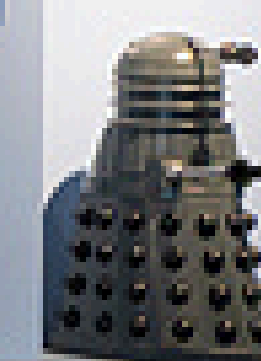
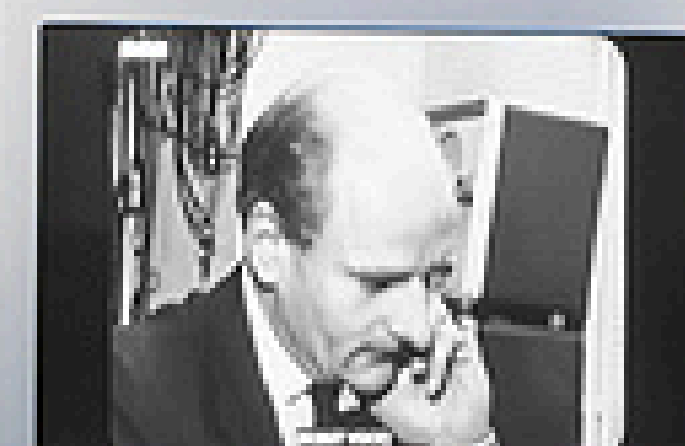






"In those days people were so cynical about electronic music and so *Doctor Who* was my private delight. It proved them all wrong."

Delia Derbyshire



"Sound transports the to another world."

Emma Bunton

TECHNICAL REQUIREMENTS & CONSTRAINTS

- **Design life:** Multi-decade installation with minimal maintenance
- **Public environment:** High visitor numbers, frequent contact, cleaning regimes
- **Material performance:** Resistance to abrasion, impact, UV fade, and chemical cleaners
- **Visual consistency:** Accurate colour control across mixed substrates and print processes
- **Geometric precision:** Tight tolerances for alignment across architectural features
- **Accessibility:** Integration of tactile graphics and inclusive interpretation
- **Programme constraints:** Installation within a live museum construction environment







PROTOTYPING & VALIDATION

A comprehensive **prototype programme** was undertaken prior to final manufacture. This included the production of representative samples and full-scale mock-ups to test:

- Print durability and edge performance
- Adhesion and fixing methods across different substrates
- Tactile legibility and long-term wear characteristics
- Colour appearance under gallery lighting conditions
- Cleanability and resistance to maintenance processes

All prototypes were reviewed and signed off by the client and design team before progression to full production, significantly **reducing risk across the final installation.**





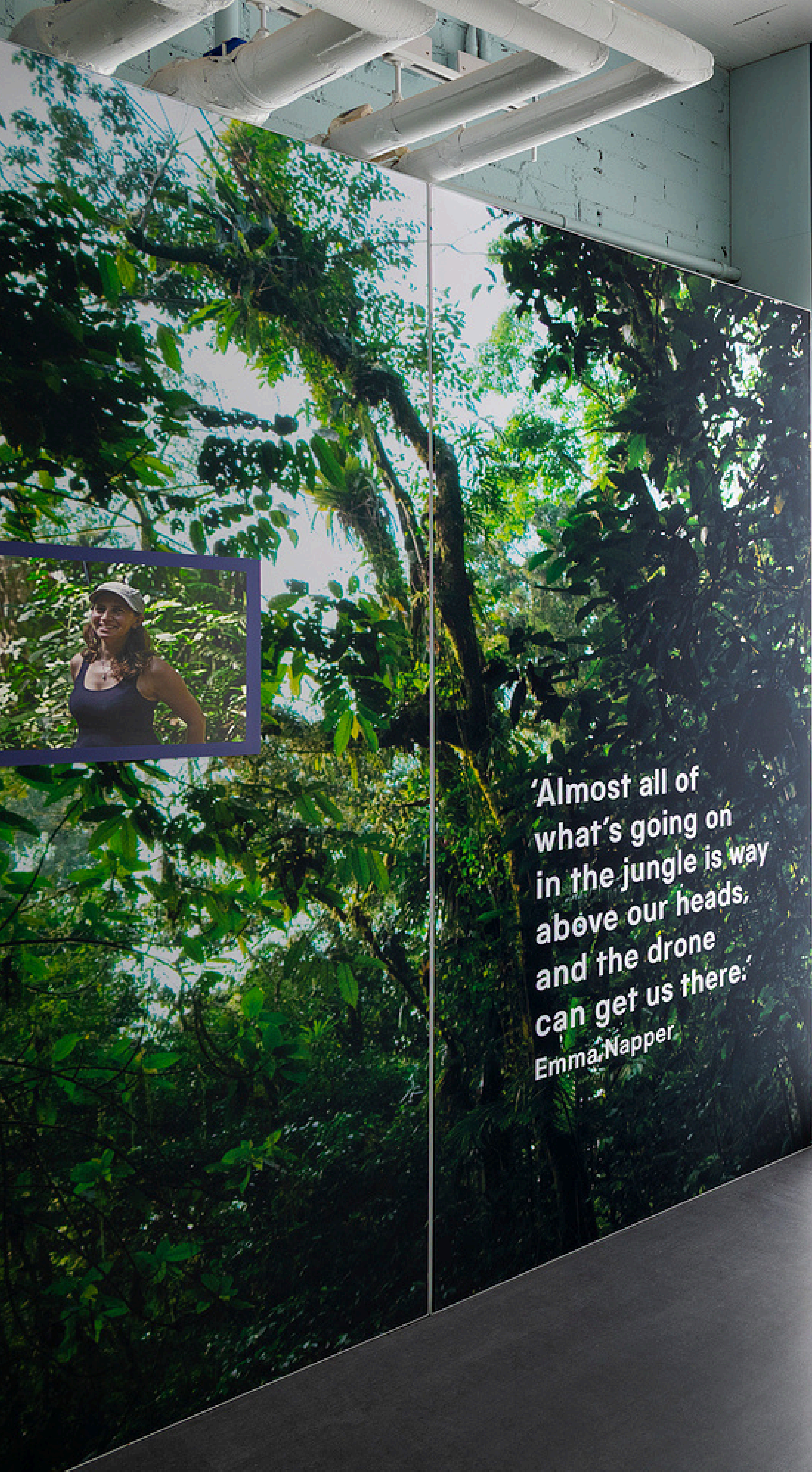


GRAPHIC TYPES & FABRICATION

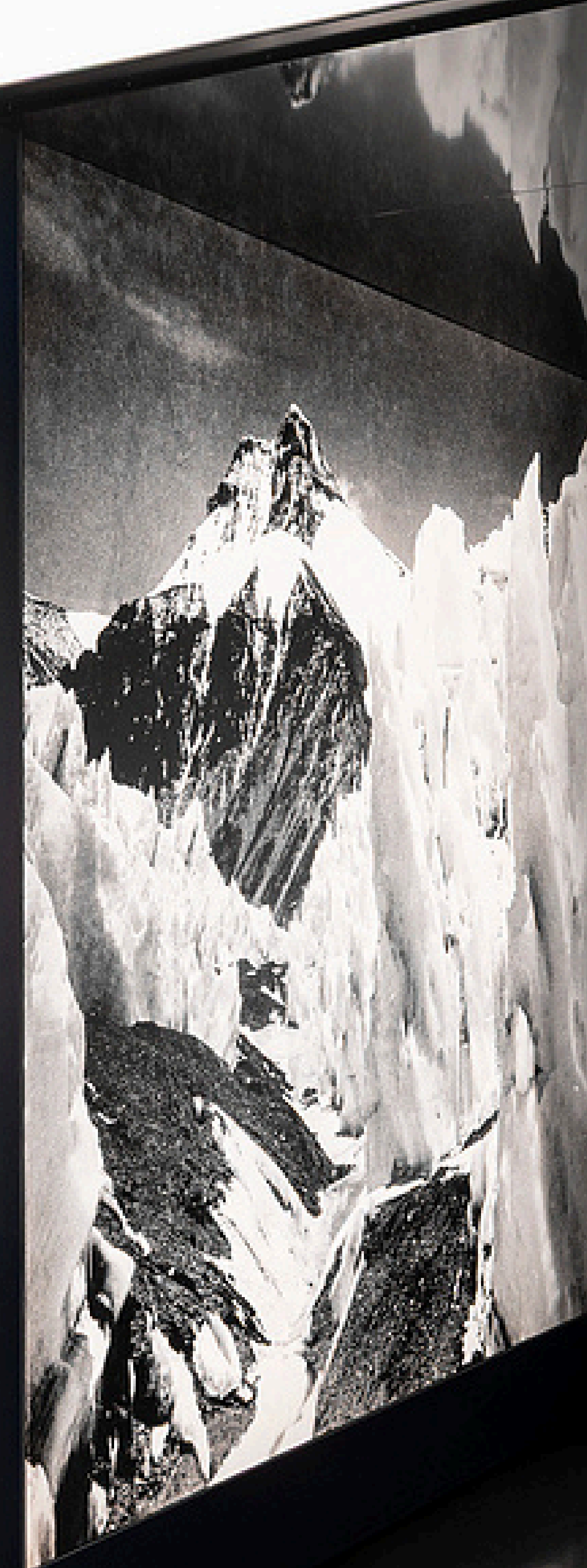
The delivered scope included:

- **Signage and wayfinding systems:** Engineered for clarity, durability, and alignment with architectural sightlines
- **Gallery graphics and interpretive displays:** Produced using a range of substrates and finishes to support the exhibition narrative
- **Screen-printed graphics applied directly to walls:** High-performance inks specified for abrasion resistance and colour stability
- **Directories:** Precision-aligned layouts with enhanced legibility for varied viewing distances
- **Anno-print graphics:** Selected for extreme durability, scratch resistance, and long-term colour permanence
- **Tactile infographics:** Raised elements engineered to retain tactile clarity over extended public use
- **One-piece wallpapers:** Large-format production to eliminate joins, installed to tight tolerances on complex wall geometries
- **Framed photographic prints:** Museum-grade print, mounting, and framing systems specified for long-term visual integrity





'Almost all of
what's going on
in the jungle is way
above our heads,
and the drone
can get us there.'
Emma Napper





INSTALLATION METHODOLOGY

All graphics were installed by our **specialist in-house installation team**, experienced in museum and heritage environments. Installation sequencing was coordinated closely with Workhaus to:

- Integrate seamlessly with the wider fit-out programme
- Protect completed architectural finishes
- Maintain positional accuracy across multiple zones
- Meet strict programme and handover deadlines

Quality control checks were undertaken at each stage to ensure **secure fixings, consistent finish quality, and accurate alignment** throughout the gallery.





OUTCOME

The completed Sound & Vision Gallery delivers a robust, cohesive, and future-proof graphic environment, capable of withstanding decades of public use without degradation.

The project demonstrates our ability to deliver technically complex, large-scale, permanent exhibition graphics within demanding cultural and public-realm settings, while collaborating effectively with designers and fit-out contractors.





**GET IN
TOUCH**

enquiries@servicegraphics.co.uk

www.servicegraphics.co.uk